

Fewston to Otley Walk

Map needed: OS Explorer 27 - Lower Wharfedale & Washburn Valley

Distance: 8.5 miles

Time: 4 – 5 hours

Description

This is a very pleasant walk following the river Washburn taking in two reservoirs, Swinsty and Lindley Wood. The walk passes through pasture and woodland following the river down the Washburn Valley. The different landscapes contain a wide variety of wildlife to look out for. The walk is 8½ miles long and should take between 4-5 hours. The walk is mainly downhill but there is a fairly steep uphill section towards the end of the walk. There are many good pubs and shops in Otley for refreshments after the walk.

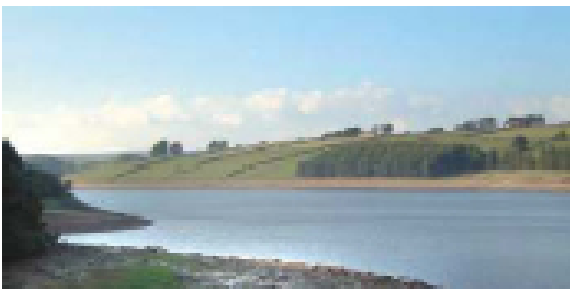


Directions

From the church walk down the road past the car park and over the bridge. Turn right straight after the bridge, going through a gate onto a Yorkshire Water permissive path. At the junction follow the track round to the right. At the start of the dam, turn off to join a public footpath going through some gates just past the house on the left. The path goes off to the left.

You will cross three stiles before arriving at a bridge on your right. Cross the bridge and immediately turn left onto a path crossing a stile. At the end of the field there is a small stone footbridge. Cross the bridge and turn left taking the lower path.

Go over two stiles, and then follow the way markers through the wood. At the junction take the path to the left of the gate over a small stream. Having crossed three stiles you will join a track. Follow this track down stream and at the T-junction there is a stone packhorse bridge to the left. Cross the bridge turning right joining a path over a stile, which carries on along side the river. Cross the river again at the next bridge. Carry on down stream and where the track joins a road, turn left going over the bridge (the road is busy so take care). After the bridge turn right onto a track following the edge of the reservoir. Keep on the track until you reach a road.



Turn right, walking along the road for about ½ a mile up into the village of Farnley. At the junction just past the school turn right and follow the road until the next corner. Where the road turns right continue straight on. Just past a house there is a stile on the left. Cross the stile and walk down through the field heading for the tree in the right hand corner of the field. Follow the line of the hedge until the path joins a road.

Continued next page

Turn right and follow the road for about 1½ miles into Otley. At the T-junction go left over the bridge following the road until it turns sharply to the right. On the corner, walk through an alleyway signed to the Bay Horse Court. Pass through the court; carry on and cross the road heading for the Black Bull pub. Walk down the side of the pub into a shopping precinct called Orchard Gate found on your left. Walk through the precinct to the bus station where the walk terminates.